

Customer :

customer

Customer part :

customer part

Comment :

Comment

S1=2.91

S2=3.16

Tmax=457

Tp S2=496.0

PI=0.48

HI=72

Sample =1726.30

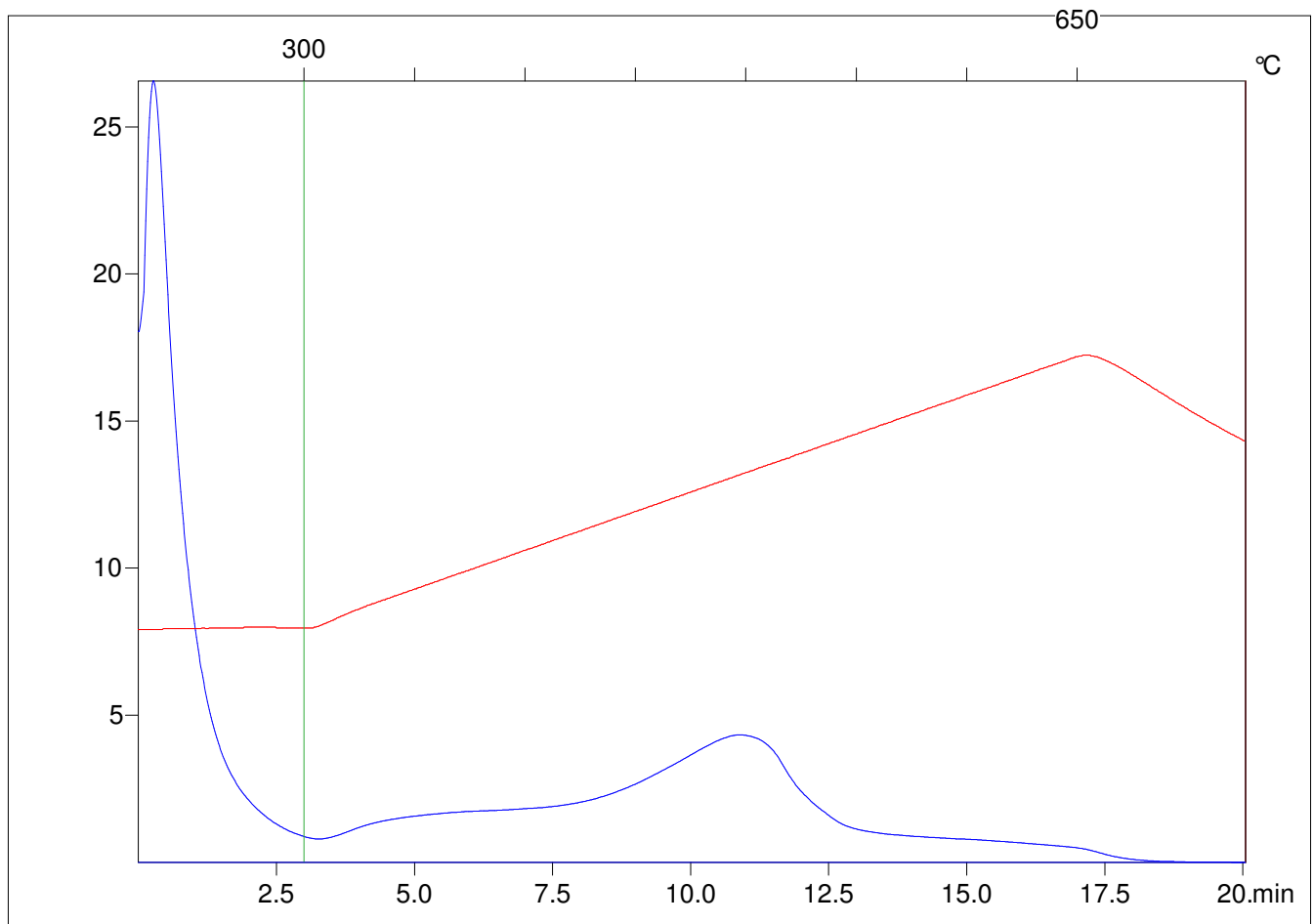
Method =Bulk Rock

Cycle=Basic

KFID(10*9)=1444

Qty =71.0

TOC=4.36



C:\VINC\PK2_1792\PK041.R00 : FID pyrolysis graphic

State

Pyro Status

Oxi Status